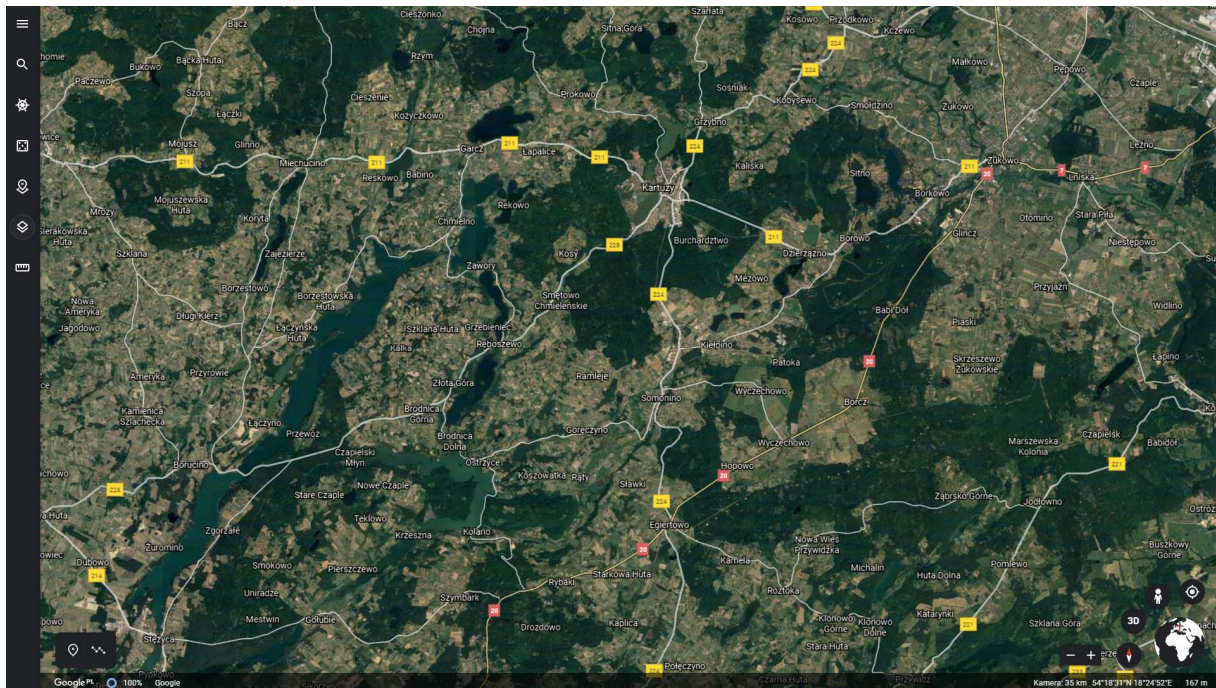


Group 2: Rural Change and foodscapes



Kashubia is a picturesque and diverse region in the north of Poland, rich in pine forests, meadows full of flowers and heather, and over 3000 lakes. It is inhabited by members of the Kashubian Slavic ethnic group with its unique culture. This group has its own language, traditions, architecture, as well as style of clothing and embroidery. The traditional occupations of Kashubs have been agriculture and fishing. These have been joined over the last few decades by the service and hospitality industries, as well as agritourism. However, the rapid development of the region has posed a significant threat to its traditional, cultural landscape.

Our working group 2 will focus on the cultural landscape of the Kashubian region. We will try to define a local identity code that could be protected and built-up with the aid of modern means of expression. We will closely cooperate on this issue with the Kashubian-Pomeranian Association which is the main organisation that maintains the Kashubian identity. We will also involve in the landscape forum the managers of the Kashubian Ethnographic Park in Wdzydze Kiszewskie which is a site for over 45 built

facilities characteristics of traditional regional architecture.

Our guiding questions will be: (1) what are the main causes of landscape degradation of the Kashubian region? (2) how can green infrastructure contribute to the revitalisation of Kashubian villages and towns? (3) what could the local foodscape of the future be?

