

Landscape Forum 2024 Tartu and South Estonia

June 24 - June 28, 2024

An international event for advancing
landscape knowledge, visioning
and collaboration

**Tartu
2024**

European
Capital of Culture

The annual event of the LE:NOTRE Institute

LE:NOTRE Institute
Linking landscape education, research and innovative practice

Kindly hosted by



Contributing to forum discussions and workshops:



Photo by: Tartu 2024

The bigger picture

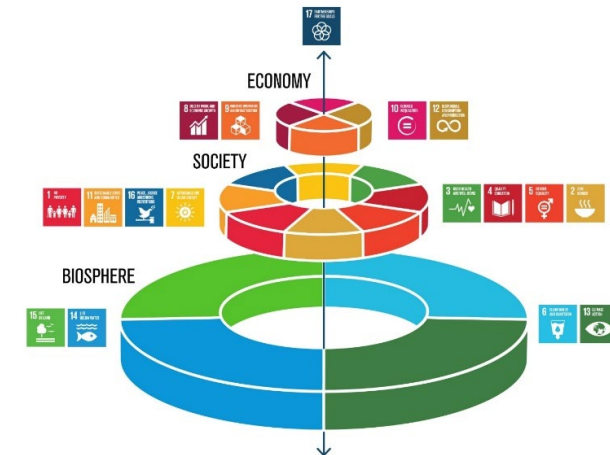
The Landscape Forum aims to stimulate knowledge building, collaboration and action for **local** sustainable development, while integrating a **European** dimension.

In accordance with the **European Landscape Convention**, we understand local landscapes as our common platform for envisioning and co-creating alternative futures.

Landscape as a concept includes **all dimensions of our everyday spatial environment**, no matter if considered as urban, rural or peri-urban.

The landscape forum is addressed to **any discipline**. This annual European event brings professional, education, research, policy and civil society perspectives together in a local & specific landscape context.

The forum contributes a landscape perspective to the **New European Bauhaus**.



<https://www.stockholmresilience.org>

An interactive event

The **local landscape** is at the heart of the landscape forum.

It is a unique opportunity for **transdisciplinary debates** on sustainability challenges.

Field work and **workshops** are core elements.



Fotos: HSWT, 2017

A transdisciplinary target audience



Researchers

Teachers &
Educators

NGOs & Activists

Professionals

Public Sector

Artists

All landscape
sectors and
disciplines

LE:NOTRE Working groups



The Forum journey across Europe

Antalya 2012



Rome 2013



Sarajevo 2014



Bucharest 2015



Cyprus 2016



Freising 2017



Malta – Gozo 2018



Zagreb 2019



Bratislava 2020



Gdansk 2021



Emilia Romagna Region 2022



Stuttgart Region / Nürtingen 2023



Theme: The landscape as the container of the bioeconomy

Focus area: Tartu and South Estonia

Forum Thematic Working Groups

Waterscapes

Forest landscape

Fibrescapes

Foodscapes

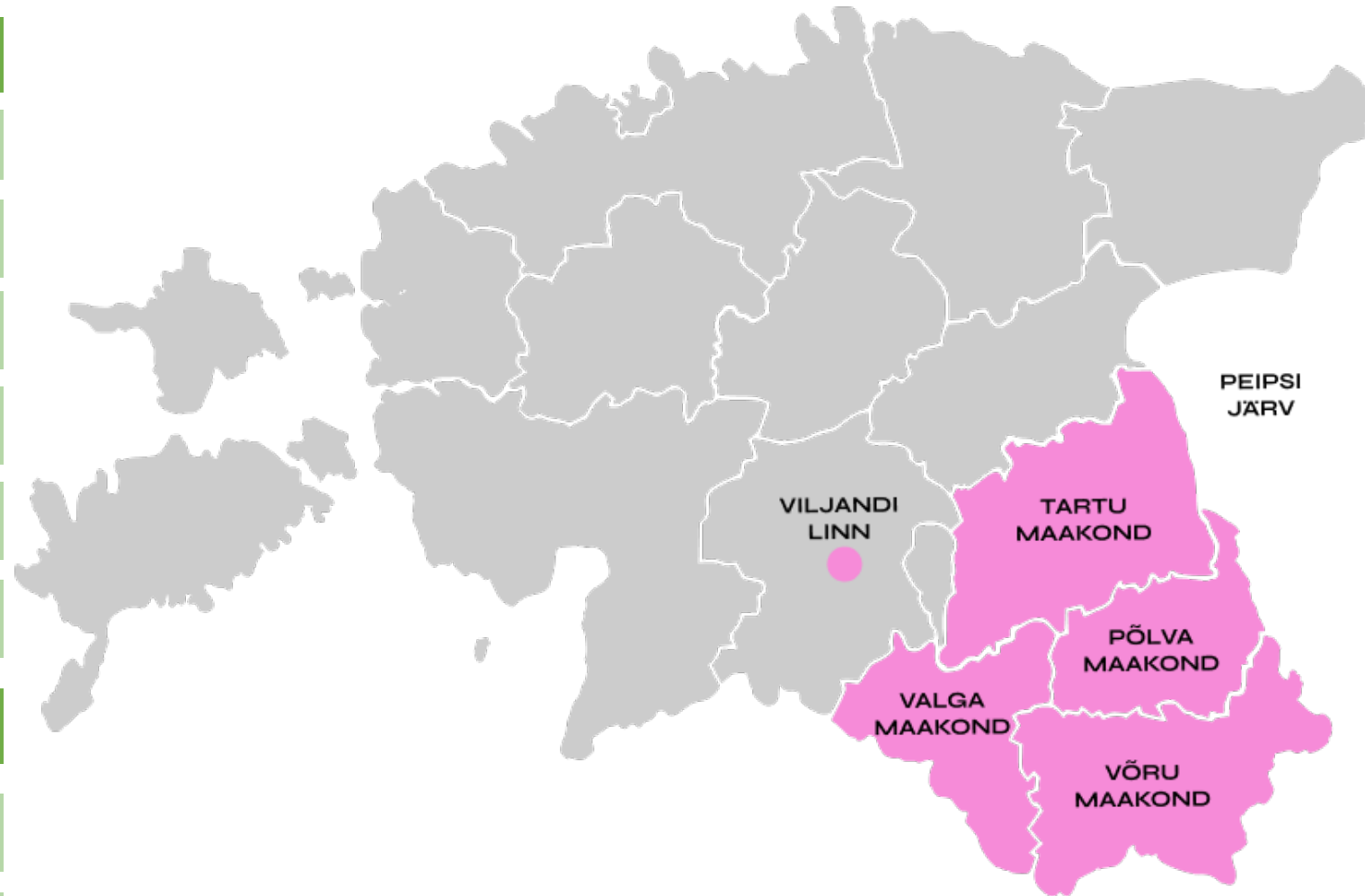
Recreation and nature tourism

Tartu as a city of active transport

Cross cutting themes

Landscape democracy

Landscape economy



Tartu 2024 European Capital of Culture

Local challenge:

how to maximise the value of the river in relation to the forecasted environmental changes in terms of flood management, ecology and human health and wellbeing.

Waterscapes

Possible focus themes and guiding questions:

1. What might be the evolution in river landscape upstream, through and downstream of the city of Tartu according to forecasted changes in rainfall, snow conditions and urban run-off? How might this affect the economic costs of water management?
2. How might use of the river landscape be maximised to promote human health and wellbeing benefits?
3. How might the various risks be best managed over time to reduce the potential disbenefits?

Local challenge:

how to allow timber harvest to continue while managing landscape change and visual and recreational impact as well as reducing habitat fragmentation and promoting biodiversity

Forest landscapes

Possible focus themes and guiding questions:

1. What strategic planning approaches might be developed to identify locations where more sensitive landscape design of forest operations should be applied?
2. What landscape-level approaches might be adopted to reduce the scale and rate of landscape change?
3. What design approaches and models might be used to minimise the visual and ecological impact and to reduce the disturbance to the ground of harvesting operations in visually sensitive areas?

Local challenge:

how to understand and develop the potential for reintroducing cultivation and use of fibre-producing crops and animal husbandry and what it might mean for the landscape

Fibrescapes

Possible focus themes and guiding questions:

1. What elements and features might be introduced into the landscape as a result of developing or reintroducing fibre crops or animals?
2. What might a landscape with a significant amount of plant fibre production (hemp, flax, nettle) and animal fibre production look like?
3. What might be the positive and negative impacts on the landscape and bioeconomy of increased fibre production?

Local challenge:

To understand the potential of Tartu city and county to become a food hub, including social, economic, spatial and environmental challenges, namely, creating joint food collaboration network in its social and spatial dimension. Promotion and marketing of locally produced food.

Foodscapes

Possible focus themes and guiding questions:

1. What is the potential for creating a local food hub in Tartu, considering organic food farming and the 'farm to table' concept?
2. If and how can the idea of an Agricultural Park be integrated into the landscape of Tartu and its surroundings?
3. How and whom to involve? How to connect different stakeholders by creating a multisectoral and locally based network, for example small scale farmers or research and development centres?



Image: Gloria Niin

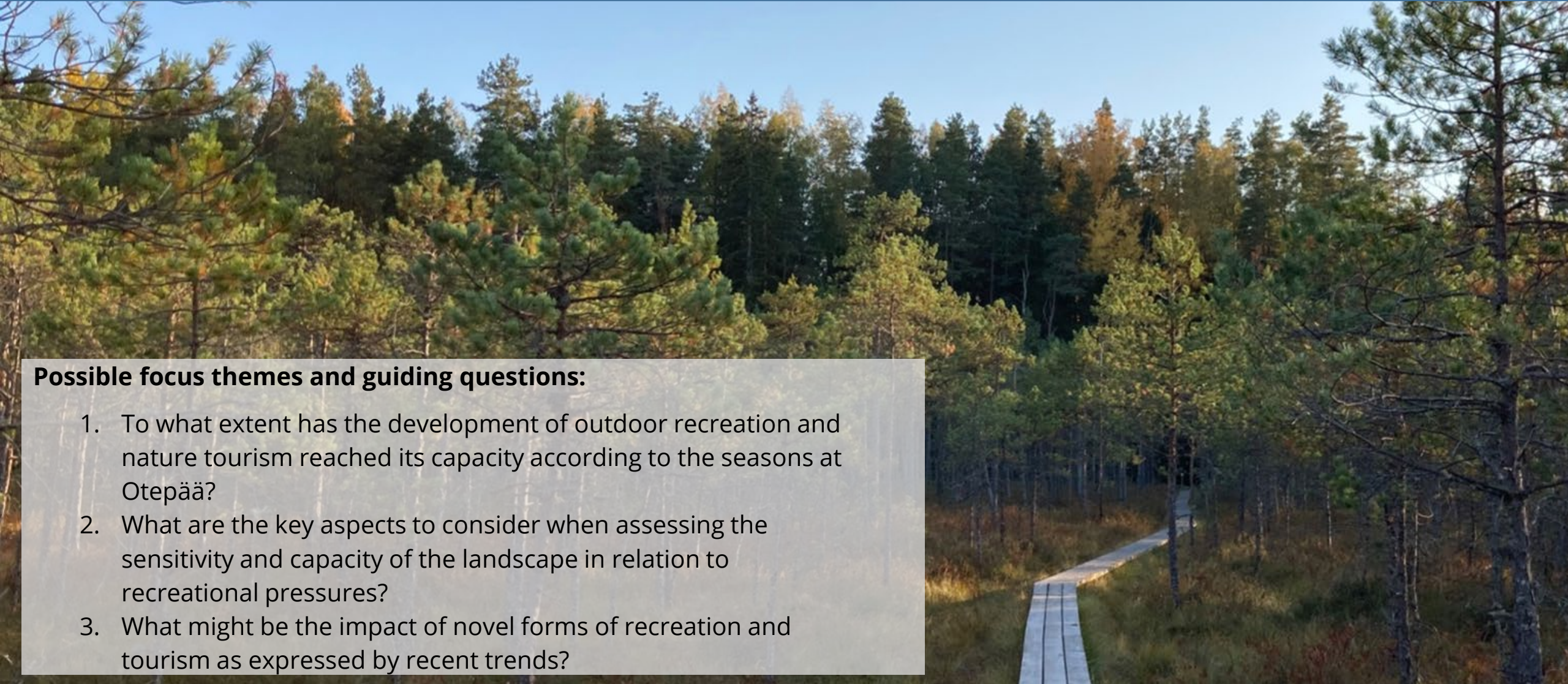
Local challenge:

How to maintain the quality of the landscape and the experiences of visitors while responding to the increasing pressures and demands as the market develops.

Recreation and nature tourism

Possible focus themes and guiding questions:

1. To what extent has the development of outdoor recreation and nature tourism reached its capacity according to the seasons at Otepää?
2. What are the key aspects to consider when assessing the sensitivity and capacity of the landscape in relation to recreational pressures?
3. What might be the impact of novel forms of recreation and tourism as expressed by recent trends?



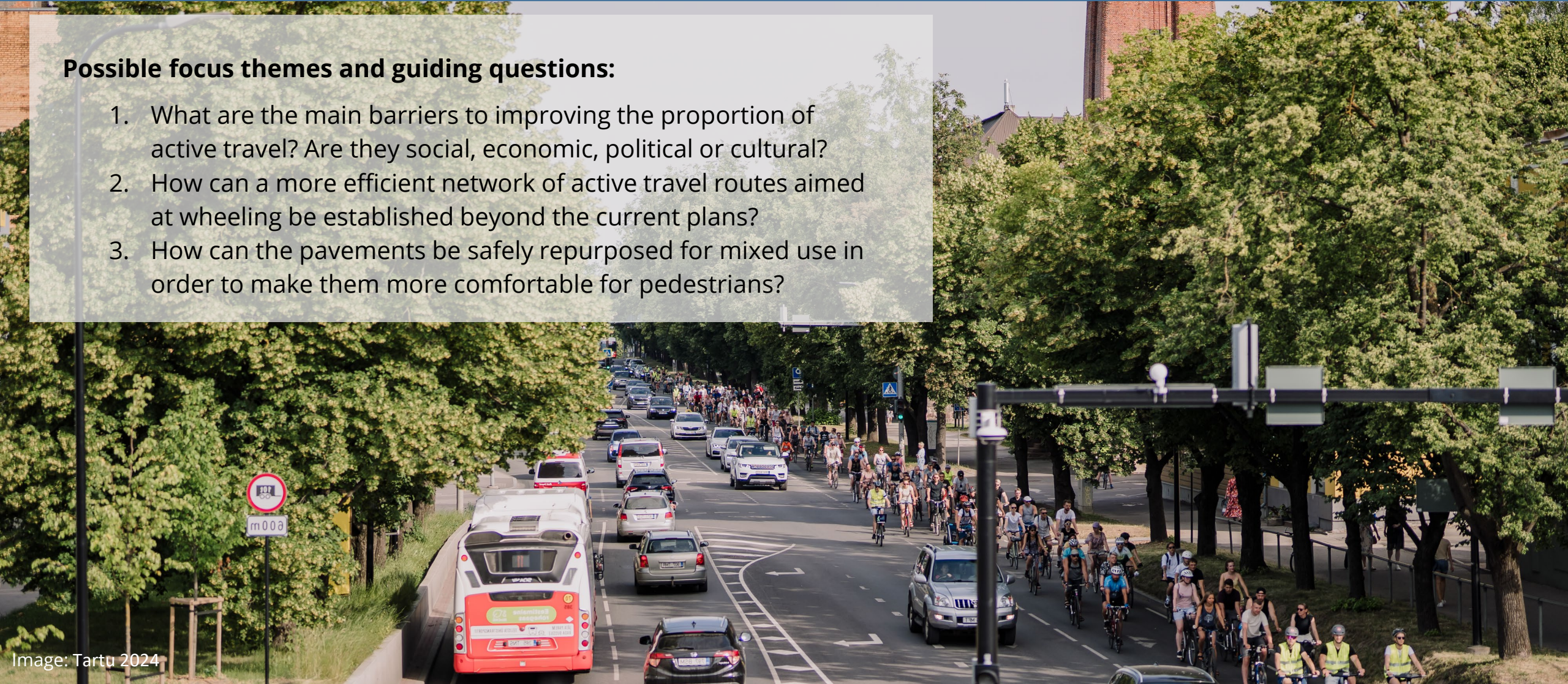
Local challenge:

To increase the proportion of non-car use in Tartu and to improve the street experience for pedestrians and wheelers and to enhance the quality of the public transport system.


Tartu as a city of active transport

Possible focus themes and guiding questions:

1. What are the main barriers to improving the proportion of active travel? Are they social, economic, political or cultural?
2. How can a more efficient network of active travel routes aimed at wheeling be established beyond the current plans?
3. How can the pavements be safely repurposed for mixed use in order to make them more comfortable for pedestrians?



Cross cutting theme 1: Landscape Democracy

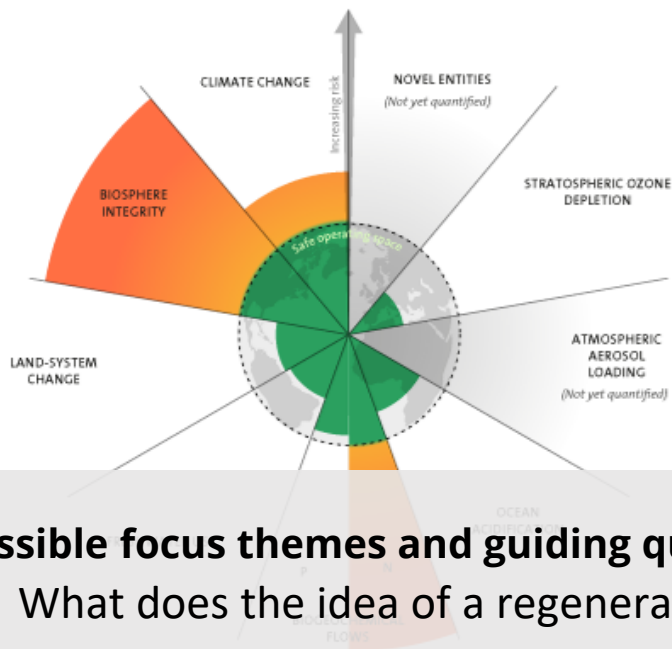


Possible focus themes and guiding questions:

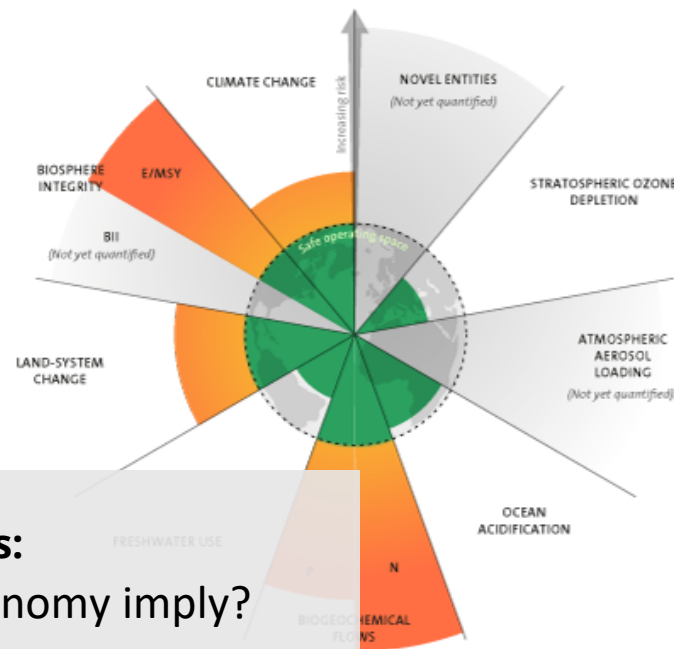
1. What are possible criteria for 'good' co-creative and participatory approaches in sustainable landscape development?
2. Which competencies do we need?
3. What did we learn from this Living Lab?

Cross cutting theme 2: Landscape Economy

2009



2015



2023



Possible focus themes and guiding questions:

1. What does the idea of a regenerative economy imply?
2. What does the idea of a circular economy imply?
3. How do alternative economic models work?
4. Which consequences do we need to take for ourselves, in education, research and practice?

TARTU 2024 - European Capital of Culture



Artistic concept: Arts of Survival

Arts of Survival refers to the knowledge, skills, and values that will help us lead a good life in the future.

Tartu Forum 2024 - dates:

Monday, June 24	Tuesday, June 25	Wednesday, June 26	Thursday, June 27	Friday, June 28
Travelling time	Introduction	Field trips	The six thematic teams continue their workshops	Final preparation of outputs and arrival of the seminar participants
	Keynote: the concept of the Bio-economy in Estonia			Workshop results are reported back by each team, with Q and A afterwards
	Keynote: Landscape as the container of the bioeconomy			The outcome statement presented by Simon Bell
Lunch	Introduction to the landscape of Tartu and south Estonia and introduction of the six themes		Lunch	Lunch
PhD colloquium	Lunch			
Networking event for new research	Start of workshops, led by the hosts and supporters, including lectures specific to each theme		The six thematic teams continue their workshops	Grand' round table and closing event, competition exhibition (and art exhibition is taking place)
Workshop leaders' meeting				
Welcome event	Free evening	BBQ dinner	Dinner and awards	Free evening

Student competition in Tartu - 2023/2024



Tartu Emajõgi river and its watercourses

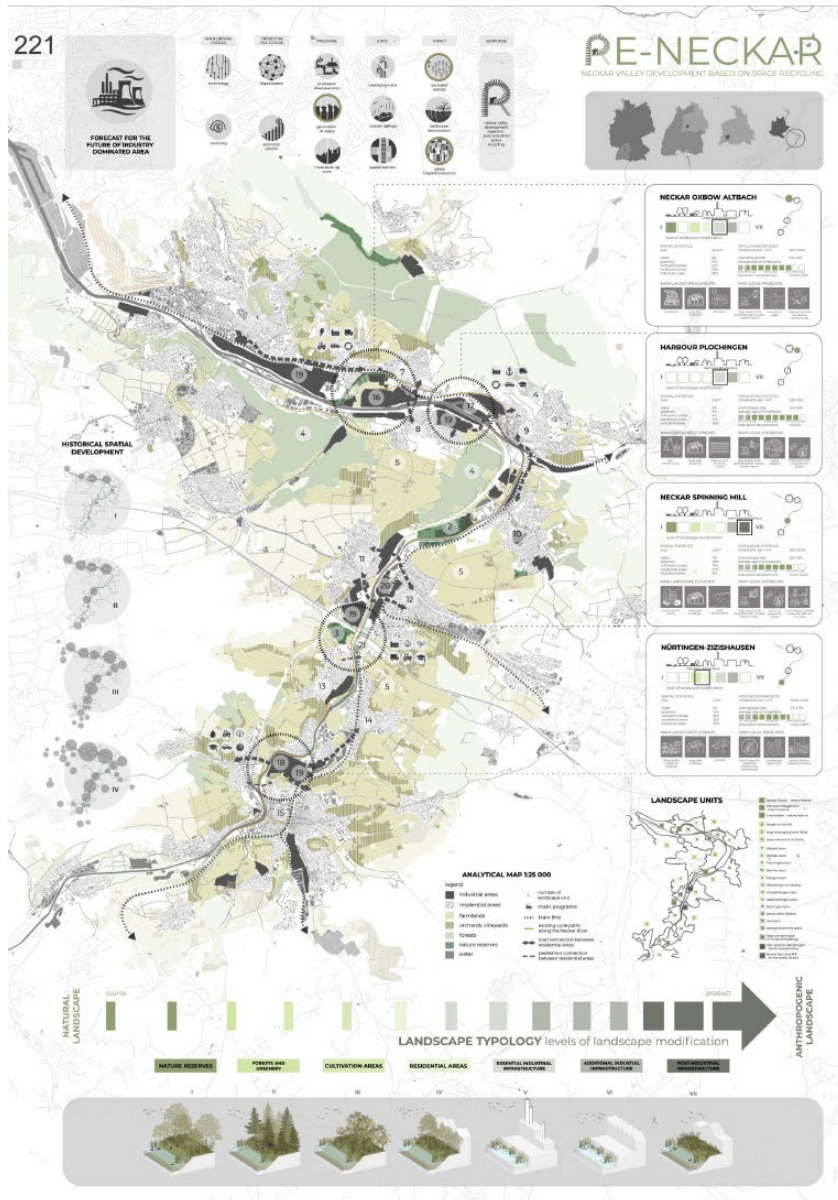
Water, urban nature and urban development pressure

<https://forum.ln-institute.org/international-student-competition-2023-2024/>

Overall vision and detailing along the river transect

- Bioeconomy
- Waterscape
- Forest landscape
- Fibrescape
- Foodscapes
- Outdoor recreation and nature tourism
- Active Transportation
- Landscape Democracy
- Landscape Economy

FORUM OUTCOMES - last year student competition



Neckar Landscape Park Competition from 2023

Winning team: Gdańsk University of Technology

Marta Hrycyna, Natalia Fronczek, Marta Kloch, Liudmila Matsisovich, Szymon Jackowski

An international student competition runs prior to the event from October to January. Visionary ideas from across Europe and beyond will inspire the local discourse.



FORUM OUTCOMES - statements

A Future for the Colentina Lakes Chain

Outcome statement
of the 4th LE:NOTRE Landscape Forum
Bucharest, Romania

April 2015



Learning Landscapes Zagreb

Key messages of the LE:NOTRE Landscape Forum Zagreb

April 9 – 13, 2019



Outcome statement of the 6th LE:NOTRE Landscape Forum
Inclusive Landscapes held in Freising, Germany, in May 2017



Part 1 - Overview, background and context

This outcome statement summarizes the main findings of the 6th LE:NOTRE Institute Landscape Forum on 'Inclusive Landscapes'. The ideas presented here may support local and regional stakeholders in shaping more inclusive landscape development processes. The forum outcome statement may also inspire democratic landscape transformation in other metropolitan areas in Europe and beyond.

The Forum Outcome Statement presents the key messages derived from the forum processes.

They should inspire and motivate local landscape action.

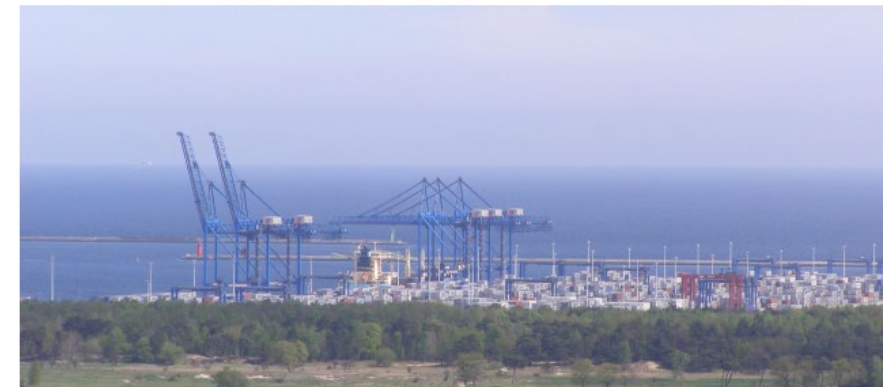
Alternative Futures for the Port Island in Gdańsk

Outcome Statement of the Landscape Forum Gdańsk 2021

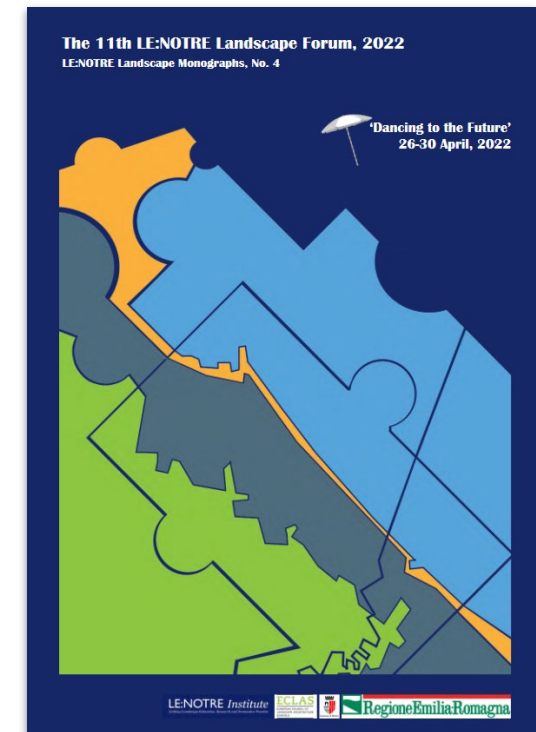
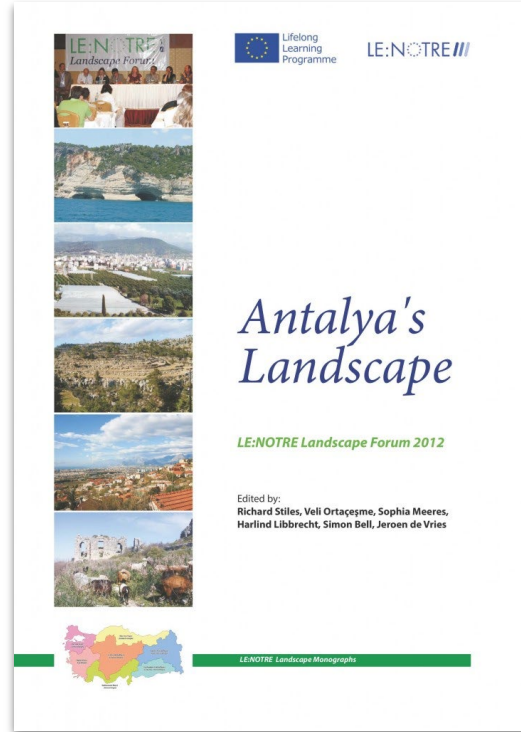
April 19 and October 16, 2021

*"Landscape is.....an area, **as perceived by people**, whose character is the result of the action an interaction of natural and/or human factors"*

Florence Convention, Council of Europe, 2000



FORUM OUTCOMES - Publications



The Forum Publication gives every participant an opportunity to publish forum findings. It is a comprehensive view on the local landscape and a good foundation for follow-up activities.

Past Forum - June 27 – July 1, 2023, in Nürtingen, Stuttgart Region



More information and contact

Landscape forum website: <https://forum.ln-institute.org>

LE:NOTRE Institute
Wilhelminaweg 12
6703 CD Wageningen
The Netherlands

Director: Jeroen de Vries
contact: office@ln-institute.org

The Estonian University of Life Sciences
Host university in Tartu,
Mana Taheri: mana.taheri@emu.ee
Simon Bell: simon.bell@emu.ee



The LE:NOTRE
Institute works in
partnership with
ECLAS

